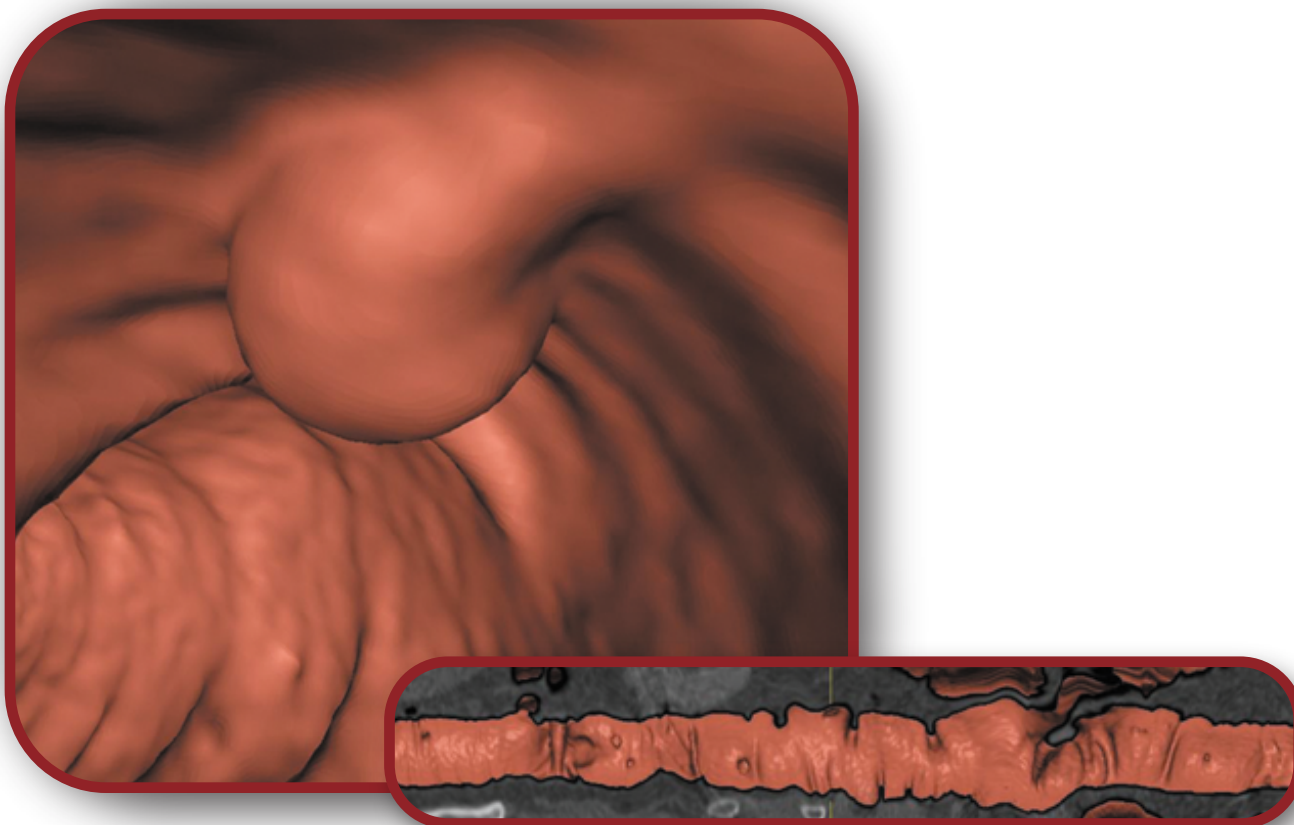


# EXAM-3D<sup>®</sup> COLONOSCOPY

Faster and more accurate diagnoses through extensive, easy-to-use and cutting-edge tools for CT Colonoscopy.



- Designed for individuals supporting all common reading types using a combination of undistorted dissected colon, endoluminal fly-through and 2D layouts.
- Leading edge productivity tools to allow rapid analysis, measurement and reporting of suspected polyps and lesions with an option for CAD.

EXAM-3D Colonoscopy is an add-on module to EXAM-3D Diagnostic. Never leave your PACS workstation with seamless integration into PACS.

**Faster. EXAM-3D** Colonoscopy's unique core design optimizes memory and computer resource utilization allowing for quick rendering of image volumes and rapid reading and reporting.

**Easier. EXAM-3D** Colonoscopy is designed to adapt to users' needs according to user profiles. As a result, the easy-to-use interface can be as feature-rich or as simple as desired.

**Better. EXAM-3D** improves patient relations with faster turn-around times, completing more studies in less time and more accurately.

# 3D Colonoscopy Features

## Multi Reading Protocols With Synchronized 2D and 3D Images

- 2D axial, sagittal and coronal views with fast scrolling and colon tracking updated in all views.
- 3D endoluminal flythrough with automated cine mode, free rotation and one click zoom on selected areas of interest.
- 3D dissected colon view allowing for rapid assessment of the entire colon surface area.

## Comparison Mode

Display prone and supine datasets simultaneously on the same screen (or on different screens). The datasets can be the same volume displayed at different settings or the volumes can be linked for comparison mode.

## Automatic Colon Segmentation and Centerline Extraction

With the ability to track through blocked or poorly insufflated sections of the colon.

## Auto Measure Distance From Rectum to Caecum

Allowing for endoscopy to navigate easily to area of interest for polypectomies.

## Visited Regions Analysis

Quickly identify the visited regions to accelerate the speed of reporting and ensure no areas are missed from reading.

## Single-Click Bookmarking

Single click tool to allow for rapid bookmarking and return to identified regions of interest and suspected polyps and lesions.

## Translucent Analysis

Apply a translucency filter to regions of interest in 3D views and assess lesion composition in order to reduce false positives created by fecal matter.

## Extracolonic Findings Reporting

Capture and report on extracolonic findings or fast switch into other EXAM-3D applications to perform more rigorous analysis.

## Measurement & Annotation

Add lengths, diameters, angles, text comments and insert arrows with annotations updated in all views.

## Advanced Polyp Analysis Option (CAD/CAM)\*

Advanced polyp analysis for automatic detection of polyps (CAD) and automatic measurement of polyps (CAM) (this is an additional option, not part of the standard product).

## Record Video Clips

Include in reports or export for use in presentations or burn onto DVD for patients EXAM-3D Colonoscopy can be easily integrated into the RIS/PACS environment.

\*Currently awaiting FDA approval

## Recommended System Specifications:

Quad core 64 Bit Processor, Windows 7/Vista/XP,  
8GB RAM, 200MB hard disk space, nVidia Quadro graphics card

CE  
0344