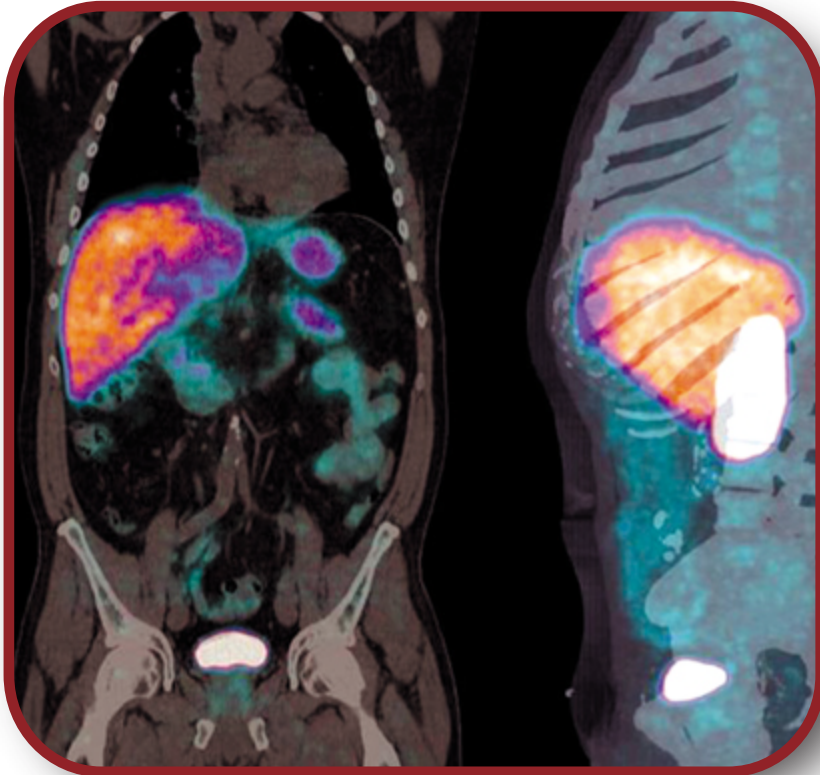


EXAM-3D[®] PET/CT FUSION

PET/CT Fusion just got faster, easier, better with CoActiv EXAM-3D

Study orientated workflows for faster and more accurate diagnoses through easy-to-use and cutting-edge tools for PET/CT visualization and analysis



- Intuitive design allows for complete flexibility for PET/CT studies from tumor identification, assessment and followups in oncology to diagnosis and monitoring of Alzheimer's Disease in Neurology.
- Simple workflows matched with advanced visualization and image registration provide for rapid reporting of studies.
- EXAM-3D PET/CT can be integrated seamlessly into the RIS/PACS environment and is an add-on module to EXAM-3D Diagnostic.

Faster. EXAM-3D Suite's unique core design optimizes memory and computer resource utilization allowing for quick rendering of PET/CT image volumes.

Easier. EXAM-3D Suite PET/CT is designed to adapt to doctors' needs according to user profiles. As a result the easy-to-use interface can be as feature-rich or as simple as desired.

Better. EXAM-3D Suite's fast rendering, image registration and hot spot identification leads to faster turnaround times for study reporting.

3D PET/CT Features

Blending of PET and CT Volumes

Advanced blending of PET and CT volumes with independent W/L adjustment with linking between different planes of view.

Automated Registration

Automated rigid registration for scans from separate CT and PET studies with the ability to manually correct misalignments.

Multiple and User-Configurable PET Colormaps and CT Presets

A broad selection of commonly used PET colormaps and CT presets for numerous study type from oncology to neurology studies.

SUV Measurement

Conversion from BQML and ability to update body mass if not predefined and SUV Max and SUV Av measurements in both 2D and 3D regions of interest.

Advanced Multi-Planar Reconstruction (MPR)

Customizable MPR layouts with wide range of tools such as obliques, double obliques, slabbing of images and auto-cineing of images in any plane.

Intuitive Measurements and Annotations

Create regions of interest with 2D Save lengths, diameters, angles, add text comments and insert arrows.

Comparison Mode

Two datasets can be simultaneously viewed on the same screen (or on different screens) allowing for comparison with prior studies. The datasets can be the same volume displayed at different settings or the volumes can be linked for comparison mode.

Customizable View Layouts

Highly customizable view layouts with supports for 2D, MPR and 3D with colormaps bars alongside views which are exported as part of any image captures or reporting.

Integrated Workflow for Reporting

Pre-defined reports reduce the time to complete an exam and increase departmental throughput.

Fully Integrated With Your RIS/PACS

EXAM-3D PET/CT Fusion can be easily integrated into the RIS/PACS environment.

Recommended System Specifications:

Quad core 64 Bit Processor, Windows 7/Vista/XP
8GB RAM, 200MB hard disk space, nVidia Quadro graphics card

CE
0344