

### Appointment Reminder

The **EXAM-RIS** Appointment Reminder is an add-on module that can be purchased to work with the **EXAM-RIS** system. This module was created by partnering with JulySoft's ReminderPro Patient Messaging System. It is a simple, yet effective appointment confirmation system. Routine phone calls can overload office staff and take valuable time away from patient care in the facility. This system will take care of the task for you. The Appointment Reminder is controlled through the **EXAM-RIS** Task Scheduler and runs as a Windows service.

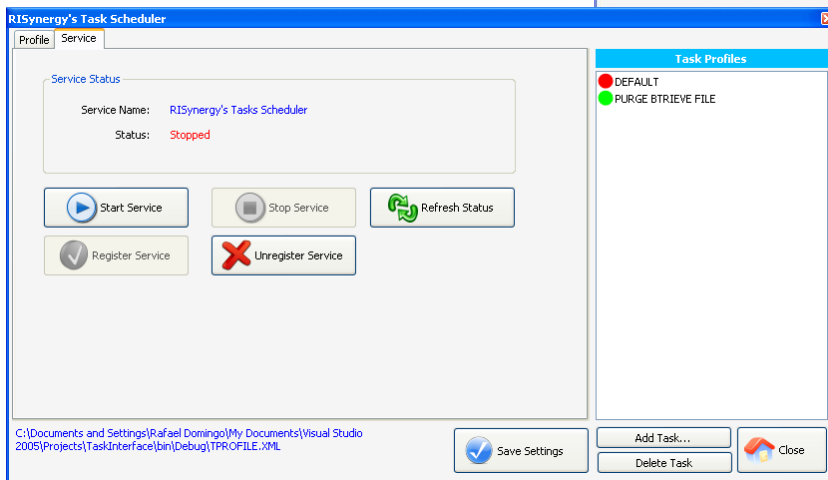
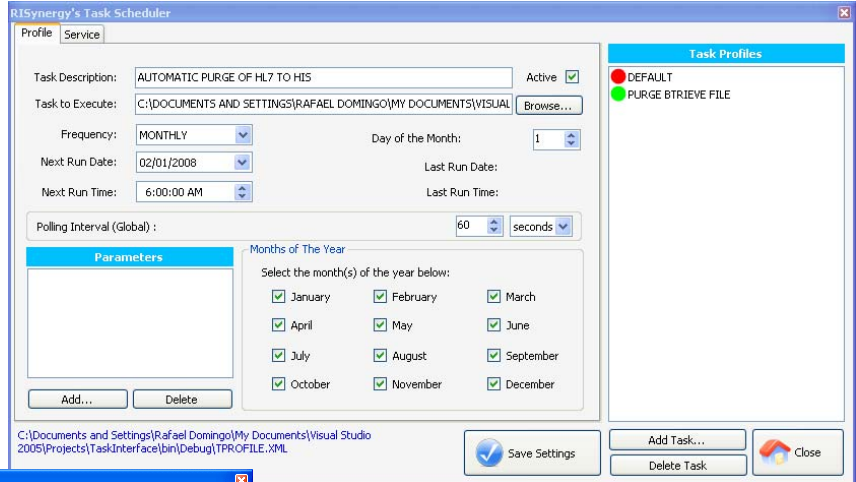


Some of the features are:

- **Helps Prevent Appointment No-Shows** – Appointment Reminder calls patients with friendly appointment reminders (in unlimited languages or dialects).
- **Provides Consistent Communication** – Appointment Reminder keeps track of calls that are busy or unanswered and the system won't forget to call back later. It can call after hours when people are more likely to be at home.
- **Reporting** – Provides detailed reports that give you a valuable audit trail of patient contact.
- **Eases Staff Overload** – Appointment Reminder works nights and weekends and is more timely and cost effective than postcards.
- **Provides a Premiere Solution**
  - Separate call-blocking database to help ensure HIPAA compliance.
  - Appointment Reminder maintains a large library of prerecorded names and automatically combines multiple calls to the same household.
  - Allows you to include additional information with each message, such as office location, new patient instructions, etc.
  - Patients can press a key and access specific information of interest such as health topics, office hours, directions, new services, etc.
  - Access to Toll-free priority Support and online training.
  - Crystal clear voice quality.
  - Trims noise and space for seamless, natural-sounding messages.

# Other Features

The **EXAM-RIS Task Scheduler** is a module designed to run as a Windows service. It allows IT Managers and RIS administrators to schedule specific tasks that need to be run on a regular basis. This module may be installed on a file server or a workstation and the frequency of each task (hourly, daily, weekly or monthly) is determined by the user.

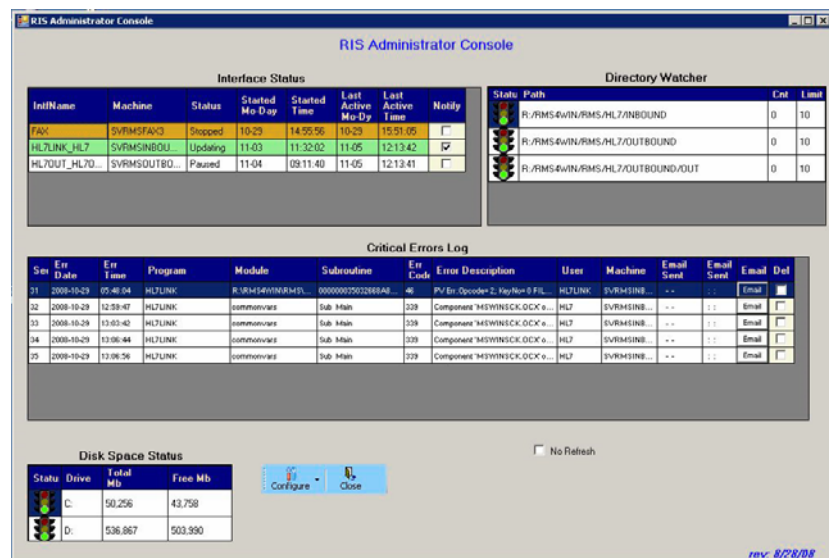


Modules that are currently used include the ability to regularly purge Pervasive database and DOS files. For example, you may schedule this feature to purge the HL72HIS file once a month. This functionality is an important time-saver that will allow you to automatically keep your database and DOS files manageable. It will also reduce the time it takes run a regular backup of your data. The **EXAM-RIS Appointment Reminder** is also run from this service.

## EXAM-RIS Administrator Console

The **EXAM-RIS Administrator Console** is a separate executable that allows IT Managers and administrators to monitor the systems and interfaces that are running, and any critical errors that occur.

The console displays the error time, date, error number and description, module, user, and machine. You may call **CoActiv Medical** to alert us to the error and email the error message to us for technical assistance from this online console.



For more information, contact CoActiv Medical at 1-877-COACTIV (262-2848) or visit our website: [WWW.COACTIV.COM](http://WWW.COACTIV.COM)