

CoActiv RSNA 2011 PRODUCTS, PROMOTIONS AND FEATURES

New Release of CoActiv Medical EXAM-PACS, EXAM-BROWSER, EXAM-RIS Featured at RSNA 2011

CoActiv Delivers PACS Your Way at RSNA 2011

CoActiv is committed to continually fine-tuning the EXAM-PACS feature list to meet the complete range of our users' needs. One of the major purposes of a PACS is to streamline workflow of everyone involved in radiology. This year, at RSNA, we are showcasing some of the new features most requested by customers themselves.

CoActiv EXAM-BROWSER

EXAM-BROWSER® - CoActiv Medical announces an innovative new solution for medical image clinical viewing and sharing. Debuting at this year's RSNA is CoActiv **EXAM-BROWSER**, an innovative and affordable, **Zero-Footprint, Cloud-Based, Universal Clinical Viewer with On-The-Fly Color 3D Reconstruction and Multi-User Collaboration**.

CoActiv EXAM-BROWSER is a revolutionary fully cloud-based, zero-footprint, universal



clinical viewer that enables anywhere, anytime review of medical images and reports. With EXAM-BROWSER, hospital and imaging center clients storing images in CoActiv's EXAM-PACS, EXAM-VAULT Cloud-Based Archive or virtually any other PACS can now enable users to view and manipulate exams with ultra-fast speed from virtually any browser-enabled computer or mobile device, anywhere in the world, quickly and securely. This includes:

DESKTOP COMPUTERS

- Windows
- Linux
- Mac

Smartphones and Tablets

- iPhone
- iPad
- iPod
- **Amazon Kindle Fire**
- Virtually All Android Phones
- HP Slate
- Motorola Xoom
- T-Mobile Slate
- CoActiv EXAM-PAD®
- Samsung Galaxy
- Blackberry Torch
- ...And many more!



CONNECTIVITY:

EXAM-BROWSER operates using

wired, Wi-Fi or 3G/4G mobile Internet connectivity. The largest and most complex exams can now be easily and quickly viewed, even in 3D, from virtually anywhere you have a Wi-Fi or phone connection.

UNLIMITED SYSTEM USERS:

EXAM-BROWSER can easily support multiple simultaneous users in different locations for true real time interactive virtual consultation and collaborations. It is also the ideal full-function, flexible and easy-to-use tool for interactive image viewing by referring physicians.

MODALITIES:

This CoActiv browser supports a full range of modalities and image formats including 2D, multi-planar reformatting (MPR), 3D and even echocardiology with full cine. It allows comprehensive image manipulation with window/level, zoom, pan, rotate and more in either single or multiple window formats.

100% CLOUD-BASED:

Utilizing the power of CoActiv's super-computing cloud servers, the system formats images remotely and streams them with unprecedented speed to users wherever located. The power of

the local device is no longer a significant limiting factor on the speed of medical image accessing. Now, even on a slow PC or mobile device, instant 3D reconstructions of CT exams with hundreds of images can be performed in mere seconds.

MULTI-USER COLLABORATION:

With EXAM-BROWSER's collaborative capabilities, radiologists, referring physicians and even patients can simultaneously view and discuss images together in real time. Physicians can easily zoom into areas of interest on X-ray exams, scroll through CT slices with ultra-fast speed and even flip and rotate 3D images.

REAL-TIME COLLABORATION:



All collaborating participants can independently utilize their mouse on a PC, or their fingers on a mobile device, to point to and even highlight multiple areas of interest and manipulate and annotate images using a broad range of tools.

The system is fully HIPAA-compliant and secure. It requires no local software installation for operation—even for advanced functionalities. All image views can be bookmarked and saved back to the CoActiv Cloud-Based servers in the TIER-IV secure datacenters.

Login is simple. Registered, authorized users simply click a link and input a username and password.

When the application opens, it presents an easily searchable list of all studies available to that user.

This exam list can be filtered and sorted by patient name, date, modality, description and more. To maximize speed and image clarity, the browser-based application automatically optimizes for available bandwidth and network latency.

EXAM-BROWSER easily works with:

EXAM-PACS: The all-inclusive and affordable CoActiv EXAM-PACS® enterprise PACS suite is recognized for its high performance, simplicity of use and intuitive user interfaces. All systems include 24/7 x 365 online software and hardware monitoring to ensure optimum performance. A typical EXAM-PACS installation costs about 1/3 to 1/2 the price of most other PACS solutions. The EXAM-PACS suite comprises a range of advanced modular components, which are also available separately as enhancements to an existing PACS or for direct connection to DICOM modalities.

EXAM-VAULT: Taking advantage of today's leading edge IT technologies, CoActiv EXAM-VAULT offers an innovative cloud-based, vendor-neutral medical image data storage system - unrivaled for its accessibility, security, reliability, and cost-effective pricing. In fact, EXAM-VAULT storage, with its unique QUAD-REDUNDANT ARCHIVING®, is so reliable that CoActiv provides a 100% Archive Up-Time SLA (Service Level Agreement). This SLA is unprecedented in the industry. In more than six years of operation, none of our clients has had a second of downtime!

And NOW With YOUR PACS: Virtually any existing PACS!

CoActiv EXAM-RIS

CoActiv Introduces Ultra-Advanced EXAM-RIS v. 2.0 with Seamless EXAM-PACS Integration

Comprehensive Radiology Management at a Truly Affordable Price

CoActiv debuts at RSNA 2011 EXAM-RIS® v.2.0, an advanced, customizable RIS that brings a full range of premium features to the management of medical images, while integrating seamlessly with CoActiv EXAM-PACS. From comprehensive, specialized worklists and automated referring physician communications to a seamless HL7 interface for billing and more, new EXAM-RIS, powered by Swearingen RISynergy®, will help imaging sites manage their workflow with complete electronic ease.

Providing a consistent interface from scheduling to report signing, EXAM-RIS supports efficient, seamless workflow and delivers tools for radiologists, technologists, schedulers and administrators. The power of new CoActiv EXAM-RIS begins with a full featured scheduling module and sortable worklists for the radiologist, technologist, front desk, transcriptionists and more. The patient registration feature captures a full range of data from other hospital systems or it can be input directly into the system—from identity and insurance information to ICD9 codes. Fully HL7 enabled, the RIS is flexible enough to interface throughout with complementary hospital and imaging center IT applications, including coding and billing.

EXAM-RIS provides a radiologist interpretation module supporting all major third party dictation, transcription and voice-to-text systems (voice recognition (VR) applications), while the built-in transcription module delivers a wide range of premium features, including boilerplate texts and extended macros. Physician reporting can be automated through fax, encrypted email or secure direct web access with flexible permissions.

Designed for the ultimate in ease-of-use, radiologists interact with the system through a comprehensive, single-screen dashboard. This provides a view of all the radiologist's scheduled procedures for that day and pending exam reads. This all-inclusive task center also enables all report transcription features, complete display of all patient histories and much more.

The full integration with EXAM-PACS streamlines the workflow further by allowing either RIS- or PACS-driven workflow. Both scenarios are possible in our standard integration, as each user can work from their preferred platform. Images can be launched directly from the RIS interface. All important RIS tools are located conveniently in the PACS EXAM-Viewer™, including critical result reporting and launching patient history and the dictation module.

A Technologist Worklist provides an overview of the status of all exams for a selected day. Helpful premium features include the ability to track patient arrivals in real time as well as patient waiting times to enhance workflow management and quality of service.

A Front Desk Worklist provides a snapshot of all daily exams with additional features such as color-coding, appointment modification and viewing by exam priority. The RIS also has a specialized Transcriptionist Worklist as well as a Manager's Worklist.

EXAM-RIS has an advanced system for analyzing patient demographics and histories and tracks patient film location both within and outside the enterprise. Reporting is a particular strength of EXAM-RIS. The application comes with a full range of standard reports and can easily be configured for any custom data analysis. Choosing a seamless integration with CoActiv's QUAD-REDUNDANT ARCHIVE® provides EXAM-RIS users with instant exam retrieval along with HIPAA compliance and audited security, making it the world's fastest and most secure archiving system.

CoActiv – PenRad Sales Alliance

CoActiv Medical and PenRad Announce Sales Alliance to Provide Integrated Mammography Image and Information Management

CoActiv Medical announces a sales alliance with PenRad for the delivery of an advanced, integrated image and information management solution for mammography. The new relationship will enable both companies to deliver a seamlessly integrated solution combining CoActiv EXAM-PACS and CoActiv EXAM-VAULT Archiving with the complete suite of PenRad Mammography Information System Modules, enabling breast centers to reap the many benefits of a complete, seamlessly integrated mammography system.

CoActiv has been a leader in PACS and cloud-based image and data storage since 2003. In recent years, the company's technology has been installed at a large and rapidly growing number of advanced mammography sites, where it supports FFDM, dedicated breast specific gamma imaging (BSGI) and more recently DICOM standard breast Tomosynthesis exams. Its state-of-the-art EXAM-VAULT Quad-Redundant cloud-based archiving stores tens of millions of breast images in a full range of modalities, as well as the complete spectrum of other radiology, cardiology, orthopedic and other imaging studies. CoActiv also supports image viewing on a full range of today's portable devices, including the iPhone, iPad, Android and Kindle Fire.

PenRad is a leader in image and information management and offers solutions for productivity and revenue optimization in mammography, general radiology and vascular workflow. Designed for flexibility and easy integration, PenRad products offer fast and reliable interpretation, reporting, tracking and management of clinical data, offering optimized efficiency and productivity.

CoActiv Validates on KINDLE FIRE

CoActiv Announces EXAM-BROWSER® Validation for the Kindle Fire EXAM-PACS add Kindle Fire Supports to its Full Range of Modern Mobile Devices

CoActiv Medical announces validation of its EXAM-BROWSER universal image viewer on the new Kindle Fire, enabling anywhere, anytime viewing of all 2D, MPR, and 3D exams with multi-user real-time collaboration on this important new pocket-sized WiFi-enabled tablet. EXAM-BROWSER is CoActiv's revolutionary fully cloud-based, zero-footprint, clinical viewer that supports web-based viewing of medical images and reports stored on CoActiv's EXAM-PACS, CoActiv's Vendor Neutral EXAM-VAULT cloud-based archive, or on virtually any current PACS (Picture Archiving and Communications System).

The Kindle Fire is a new full-featured, very portable tablet from Amazon and features a bright, multi-touch 7-inch color display with a 1024x600 pixel high-resolution, 169 ppi display and a precedent-setting low purchase price of under \$200. Use of the EXAM-BROWSER on the new Kindle Fire will enable referring physicians or attending physicians to instantly review patient radiology, cardiology, orthopedic and other medical images while anywhere in a hospital, their medical office, at home, or virtually anywhere there is an available WiFi connection... including many airline flights.

CoActiv Medical Announces EXAM-PACS® Support For Breast Tomosynthesis Exams

Validates With DICOM Standard 2D and 3D Multi-Frame Breast Tomosynthesis Exams From Participating Mammography Vendors

CoActiv Medical announces a demonstrated ability to acquire, display and archive the new DICOM standard breast tomosynthesis exams in its EXAM-PACS® web-based PACS-- including the Hologic 2D and 3D Combo multi-frame exams.

Digital breast tomosynthesis is rapidly gaining acceptance for breast cancer screening as a step-up replacement for regular FFDM exams. It utilizes a digital X-ray that records a series of low-dose, high-resolution images while traversing a small arc around the breast. These multi-frame 3D images are then combined with the standard 2D FFDM images, acquired at the same time, to form the complete exam. According to many mammographers, breast tomosynthesis provides studies with increased clarity and a degree of enhanced, slice-based detail significant enough to reduce some of the false-positives and false-negatives associated with standard 2D mammographic imaging and could significantly reduce call-backs and minimize re-examinations.

CoActiv EXAM-PACS is among the first in the industry to support these exams.

Echo Cardiology Measurement Tools added to the EXAM-PACS Toolbar

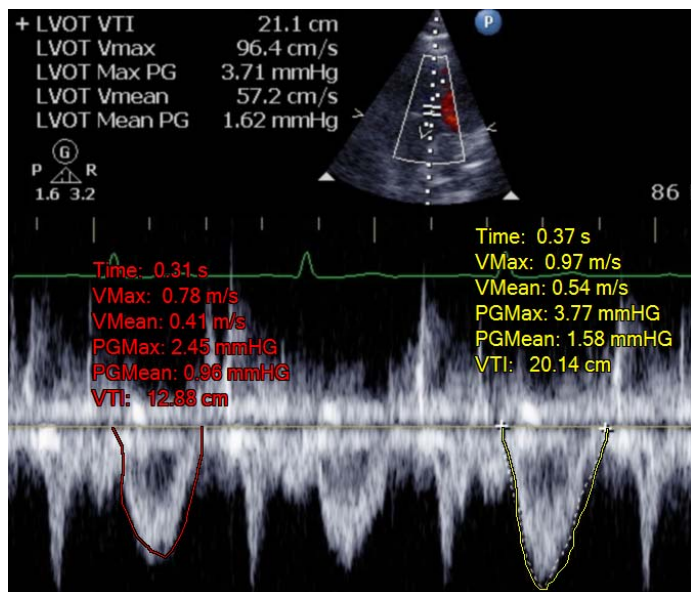
Viewing and Reading Echocardiograms in CoActiv EXAM-Console™

Additional Cardiology Specific Tools:

CoActiv has added several new tools specific to the Echo cardiology exam. It is now possible to calculate (or compare) mean velocity and make static and spot measurements on applicable images.

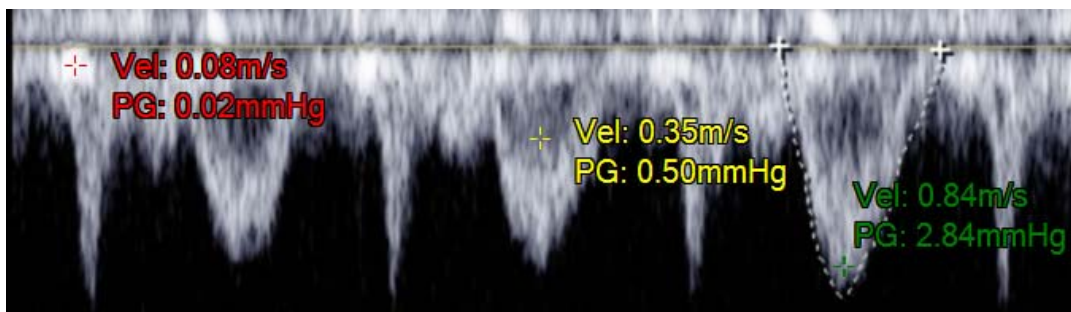
Mean Velocity:

The mean velocity tool measures wave time, **VMax**, **VMean**, **PGMax**, **PGMean** and **VTI**. It can be used to measure multiple wave forms or double check the measurements made at the modality. By clicking the tools button and selecting "**Mean Velocity**", the mouse cursor can trace a wave form by holding down the left button and dragging the cursor along the wave. Multiple waves can be measured, and each will be given a unique color, both the measurement line and the values.



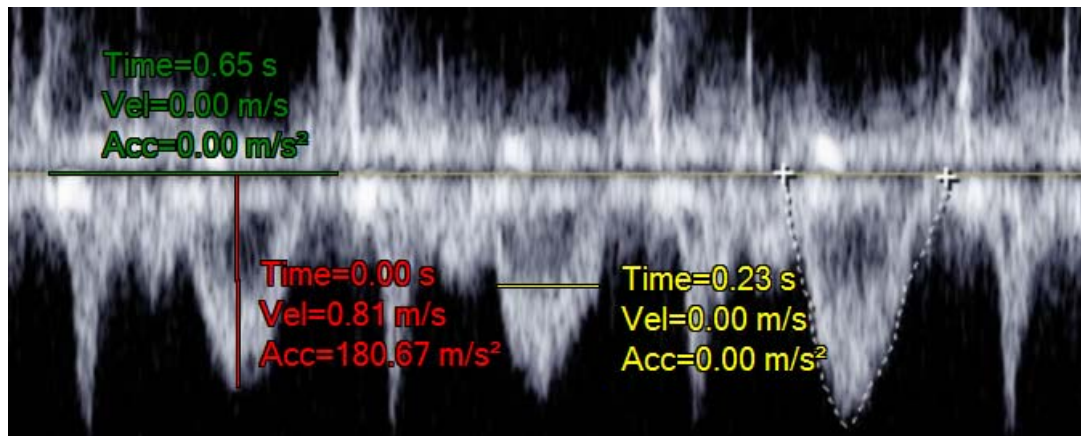
Spot Tool:

This tool will give velocity and pressure measurements at any given point on the wave. It is also capable of multiple measurements and will assign each measurement a unique color for easy reference.



Measure:

The measure tool will calculate the value for time, velocity and acceleration across a line drawn on the image. Again, each subsequent measurement will be assigned a unique color.



CoActiv Medical Announces EXAM-JACKET with Enhanced TimeLine Functionality

The innovative CoActiv EXAM-JACKET™ is a digital representation of the "film jackets" of yesteryear. Since CoActiv EXAM-PACS is 100% paperless as well as 100% filmless, a method of providing the reading radiologist with all the documents and other information that used to be stuffed in the old file jacket along with the Prior films was needed. EXAM-JACKET is the solution to this requirement. As soon as the radiologist selects and launches an exam in the CoActiv EXAM-Viewer, a digital array of thumbnail listings of all prior exams instantly appears on the viewer screen. However, the list of available information does not stop there... it just begins.

Innovative Enhanced Functionality of EXAM-JACKET:

- **Instant Exam Information:** Hovering the windows cursor over a prior exam thumbnail instantly displays a complete pop-up list of all the exam information, including full patient name, exam date and time, full exam description, accession number, ordering physician name, and number of images.
- **Instant Prior Report Impressions:** Immediately available, with a single click on the report icon in the thumbnail, is the *Impression* from the diagnostic radiology report.

- **Complete Prior Reports:** One click in the impression instantly makes the entire diagnostic report visible.
- **Opening a Prior Exam Window:** Clicking on a selected prior thumbnail instantly launches *an additional viewer window, automatically splitting the monitor screen into two equal windows* and locating the selected prior directly next to the original new exam.
- **Adding Multiple Additional Viewer Windows:** Clicking on any *additional priors* will automatically subdivide the screen into three or even four equal viewing windows **per monitor**, allowing for the simultaneous viewing of up to four exams at one time, **per monitor**.
- **Multiple Monitors:** This capability allows for up to *eight exams with two monitors* or up to *twelve exams with three monitors*.
- **Viewer Re-Sizing:** Double-Clicking can instantly fill one of the viewer windows with a full image and one button can fill the entire monitor screen with either *one exam, one series, or one image* from any one of the multiple exams.
- **Window Positioning:** Viewing windows can *easily dragged and dropped* anywhere on any of the monitors to allow *easy side-by-side comparisons* of any of the open exams.
- **Viewer Reset:** A *right-click* in the EXAM-Jacket timeline display will automatically return all open viewer windows to their original positions.
- **Synched Scrolling:** Multiple exams of the same type (MRI, CT) can be *automatically synched* so that scrolling one will scroll all appropriate exams.
- **Auto Re-Scaling:** At any time, closing one or more of the open priors will automatically re-scale the monitor screen to maximize exam sizes for the remaining exam windows.
- **Discrepancy Indicators:** Built-in Discrepancy notification will indicate if any of the displayed exams does not agree with the original exam or any of the other priors regarding Patient Name or Date of Birth.
- **MRN Based Exam Selection:** Since the displayed prior list is based on the Medical Record Number (MRN), all exams for the same patient will be presented even if the Patient Name changed due to marriage or other reasons.
- **Additional information:** Since EXAM-PACS allows facilities to scan and attach virtually any type of file to any exam, this permits any of the attached files from any of the open exams to be immediately viewed, including prescriptions, insurance cards, drivers licenses, technologist or ER physicians notes, or even voice clips. Virtually any images, files or other information that was previously in the old "film jacket" is now instantly available digitally to the physicians.

The CoActiv Free EXAM-PACS for RT Schools **Extended for Another Year**

To help ensure the technical facility of the radiology professionals of the future, CoActiv announces the extension of its unprecedented offer to provide complimentary EXAM-PACS software to educational institutions for use in accredited Radiologic Technologist training programs. This program is being rolled out on a state by state basis beginning in New York, Connecticut, New Jersey and Massachusetts. Additional regions will be added as resources become available. This program has already been tested with several RT Certified Programs in these states.

CoActiv Medical General Features and **Functionality Yield Multiple Client Benefits**

Versatility and Performance at a Fraction of the Cost of other systems:

- Easy to use
- Low cost of acquisition, installation, maintenance & support.
- Fast & easy financing... *or...* pay on a "Per-Exam" basis.
- Web-Based, Software-Based with non-proprietary hardware requirements.
- Scalable from small single sites to multi-site enterprise installations.
- Implement as a full solution, or install CoActiv's PACS components incrementally to an existing PACS or directly to DICOM modalities.
- Fast, easy and non-intrusive installation, setup & training.
- Seamless and inexpensive, fully integrated PACS / RIS / Dictation solution.

***On-Site & Off-Site, Always On-Line* exam archive system where exams are saved four times in a Quad-Redundant HIPAA Conforming architecture:**

CoActiv EXAM-VAULT Archive Service with 100% Up-Time SLA (Billable on a Progressive Monthly Fee or a One-Time on Acquisition Fee)

- All archived exams *Always-On-Line* and instantly retrievable.
- EXAM-Vault Archive validated for GE and Hologic Digital Mammography exam acquisition, viewing, remote distribution, archiving & CD burning.
- EXAM-Vault Archive validated for Philips Xcelera Digital Echo-Cardiology exam acquisition, viewing, remote distribution, archiving & CD burning.
- Automatically transmit exams securely and instantly to referring physicians, in a background mode using our patent-pending referring physician system - CoActiv EXAM-Sender®.
- Create study CDs viewable on any Windows PC to include Reports, Voice Clips, Scans and More with the industry's best & most marketing-oriented CD burning system - CoActiv EXAM-Filer®.
- Customize the functionality of our PACS-Human interface, CoActiv EXAM-Console, for improved workflow and increase productivity.

- Fast and intuitive viewer resulting in superior diagnostic viewing capabilities with CoActiv EXAM-Viewer. FDA Approved for primary digital mammography reads on the PACS workstation.
- Multiple optimized exam download options depending on user's location; local or remote.

Speed and Functionality with CoActiv EXAM-Console

EXAM-Console is the primary user interface for EXAM-PACS with the following functionality:

- Instant Customizable Searches, based on Date or Date Range, Patient Name, MRN, Accession #, Modality(s), Exam Description, Reading Doctor, Referring Physician, Sex, Age, Age Range, Exam Origination Site, Archive Server Location, or any Combination of the above.
- Unlimited customizable exam Worklist and Search filtering by user. (from all sites!)
- Instantly list & retrieve all *Prior Exams*, with auto-loading of most recent relevant prior. (from all sites)
- Simple and easy to understand visual queues indicating if an exam has one or more priors, attached files, notes, voice notes, reports, Read status and exam priority.
- One-Button to launch *PowerScribe* (or other) dictation system.
- One-Button to Close, Mark-Read, Print Summary Series, Bring-Up Next Exam.
- *Quick View* an exam without adding it to your Worklist.
- Add exam to your or another's *Worklist* and *automatically* send it to a referring physician and others.
- *Automatic* download of new exam(s) added to Worklist.
- Ability to easily add an unlimited amount of 'Notes' and/or 'Voice Notes' to an exam.
- Ability to easily mark an exam "STAT"
- Optionally display a *pop-up notification* when a new exam has been received.
- Most features may be personalized, enabled or disabled based on user account permissions within the PACS.
- Includes built-in scanning capabilities providing automatic, multi-sheet, single & double sided document acquisition and management. (requires appropriate TWAIN compliant scanner)
- Attach *any* type of file(s) to an exam (i.e. Scanned documents, reports, prescriptions, pre-certifications, saved email, voice clips, video clips, etc.).
- View detailed *history* of exam. (Acquisition, read, view, Mods added, etc.)
- Easily determine if exam has been *modified* since added to Worklist and quickly see what type of change has occurred (i.e. file added to exam, exam marked read, etc.)
- *Print* exam to any attached DICOM film printer, with selectable print layouts.
- *Print* exam to plain or photo paper on any local or networked printer, with selectable print layouts.
- *Store* exam in "Saved Exams" folder for easy future access.
- Easily *anonymize* exam(s) for teaching, training or demonstration purposes.
- Easily *burn EXAM-CD™* for patient or referring physician. EXAM-CD includes

an Auto-Run EXAM-Viewer, customized with imaging facility's logo and website link. CDs can be used on any Windows based PC with *no installation required*.

- Ability to work with *multiple exams* from the same patient or from different patients simultaneously.

Diagnostic Viewing Advantages with CoActiv EXAM-Viewer

EXAM-Viewer is the fastest and most intuitive DICOM image viewer with the following capabilities:

- Use Convenient Thumbnails or Series Listings, or both, to select visible series windows.
- View *unlimited* number of exams simultaneously (limited only by workstation resources).
- View *multiple series* simultaneously in a variety of screen layouts.
- Scroll/Slice instant "*Jump*" feature – jumps to mid-series or user entered image number.
- *Manually* enter window/level parameters or use *unlimited custom w/l* presets by modality and user.
- Multiple zoom options including *6 preset zoom levels* and ability to temporarily zoom a series to full-screen then return to multiple series layout with a *single click*. Includes One-Button Zoom-to-Actual-Life-Size.
- *Pan, Flip, Rotate, Invert* images and then return to original state with one click to *Reset Image*.
- Easily *auto-apply* image display parameters (zoom, win/lvl, etc.) to all images in a series or all series.
- Image enhancement capabilities (i.e. smoothing, interpolation, edge enhancement, etc.)
- *Multiple / Customizable image-overlay options*, by Modality, including demographics, anatomical side markers, rulers, etc, each of which may be individually enabled/disabled.
- Automatically Display any Field contained in DICOM Header of Image on the Image Display Overlay, customizable by Modality, Exam Type, Overlay Position, and by Diagnostic Workstation.
- *Instantly view* all information contained in the DICOM header of each image with a single keystroke.
- Tools allowing *multiple measurements* on a single image (multiple *color option* for color monitors).
- *Region of Interest* tools (ellipse, rectangle, freehand, etc.) allowing multiple ROIs on a single image. (Multiple *color options* for color monitors).
- *Annotation* tools (multiple text labels, arrow, etc.).
- *Select label text font*, size, attributes and colors (on color displays).
- Semi-automatic vertebrae & space labeling for spine exams, with auto- referencing on all views.
- Permits *technologist to pre-W/L*, annotate, etc. to prepare images for radiologist.
- Create a "*Summary Series*", making it a permanent part of the exam, with unlimited *key images*.

- Multiple, configurable localizer options including ability to show reference lines across all series simultaneously as well as auto pop-up localizer.
- *Automatic localizer* which automatically determines which image(s) to use for pop-up localizer(s).
- *Synchronized scrolling* of images across series and even across multiple exams.
- Multi-Frame Image Viewing Slider-Bar and image masking control.
- Speed control Cine function for multi-frame or multi-image animation, with loop or bounce option.
- Custom, user-configurable multiple monitor support.
- Instantly re-arrange series layouts and positions.
- *Hanging Protocols*, user-customizable by modality, exam type, series, description, etc.
- One-Button to hide thumbnails and series listings to *maximize viewing area*.
- **Copy images to Clipboard or export images to BMP, JPG, AVI files for use in training or demo.**
- Easily print series to any Windows or DICOM printer(s) with selectable print layouts.
- Most features are available via the *mouse, and easy to remember keyboard shortcuts*.
- Flag Image feature – tags images for advanced integration or print functions.
- Multiple, configurable, Pop-Up & Series Localizers and Intersect capabilities.
- One-Button Color 3D/MPR bi-directional interface feature. (EXAM-3D[®] (Included), Voxar, Vitrea, etc)
- One-Button Orthopedic Templating bi-directional interface feature. (OrthoView)
- PET-CT Fusion now available through EXAM-3D.
- One-Button to Assess Cardiac Function and Profusion & 3D Nuclear Medicine (MedImage).

CoActiv EXAM-3D Enhanced Visualization & Reconstruction

(Utilizing advanced technology from Biotronics3D)

Faster, better, easier advanced visualization solutions from CoActiv have continued to expand and improve during 2011 and there are a range of innovative features. This year saw the expansion of EXAM-3D Suite with the introduction of EXAM-3D Lung and a thin client version of EXAM-3D Diagnostic.

EXAM-3D Lung is a clinical application for EXAM-3D Suite for the analysis and assessment of pulmonary lung nodules. The system provides automated identification of difficult to find lung nodules and then provides users with one click analysis including volume measurements and comparison of historical scans for monitoring of nodules over time.

EXAM-3D Diagnostic Cloud-Based Version is an optional version of CoActiv flagship software that provides accessibility across the imaging enterprise through a revolutionary *no-client* version of the system. The system uses technology from Microsoft Silverlight 3.0 providing a completely secure, browser based environment that does not require the downloading of any plug-ins or components to the client PC; just log-in and use all the EXAM-3D Diagnostic functionality regardless of location.

CoActiv EXAM-3D Suite also provides a wide range of features across its advanced clinical applications. These include:

EXAM-3D Vascular has vessel plaque analysis for the assessment of hard and soft plaque as part of stent planning. The speed and accuracy at which centerlines are created in vessels has also improved along with significant improvements to bone removal segmentation, which, in most cases, is a one-click operation.

EXAM-3D DCE MRI has an expanded range of contrast uptake maps to further add to the unique ability to compare studies even when scan parameters or contrast agents are different between scans.

EXAM-3D Colonoscopy is a clinical application for EXAM-3D Suite for the analysis and assessment of colon nodules. The system provides an instant one-click visualization of the colon fly-through as well as representational, axial, coronal and sagittal views showing cursor location and direction with easy identification of difficult to find nodules and then provides users with complete analysis including volume measurements.

In addition, across the entire range of EXAM-3D Suite applications, 3D renderers have increased image quality and allow for increased detail to be visualized and smaller pathologies to be identified. Additional printing and DVD burning functionality have also been introduced.

PACS/RIS Integrations: Continuing to make PACS/3D integration more seamless and reducing the time to first image are at the core of CoActiv integration development. New automated background loading and data transfer has been introduced to further improve users experience and allow for fast availability of 3D tools and functionality when working in PACS. EXAM-3D can now auto-launch the thin slice axial series (or any other chosen series) when a CT exam is loaded in the CoActiv EXAM-PACS Viewer providing Instant 3D reconstructions, saving time and keystrokes for the busy radiologist. To learn more and to experience faster, easier, better advanced visualization, visit the CoActiv booth (#7300) at RSNA 2011.